



Is testing of large industrial hose or long hydraulic hose possible in a safe and practical manner? Our new P 350 test bench unifies our years of experience with your advanced requirements for special hose equipment. The extra-large test chamber gives you the space you need for your challenge. Pallets with hoses as well as large, heavy hose coils can be easily supplied to the chamber by forklift. Hose samples are connected easily with adapter hose and quick connection to pressure ports. The P 350 comes with a number of standard features such as internal lighting and a portable power aggregate, and caters to individual test logging.



P 350



P 350_Chamber-3600mm

Innovation and quality

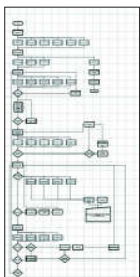
- Testing of up to 120 hoses per hour
- 4 parallel test lines
- Combination of two test chambers (mirror arrangement)
- Fast workflow thanks to separately running test chambers (for alternate setup and testing)
- Quick-clamping system holding up to 4 hoses for parallel testing with customized settings
- Internal lighting system
- Quick changeover between automated and manual setup mode
- Separate portable power aggregate (with 2 m connecting cable)

Safety and CE conformity

- Rigid doors with safety switches
- Large inspection window made with transparent Makrolon®
- Display for bubble-free flooding on aggregate
- Customisable test logs and reports (for storage and printing)

We reserve the right to make technical changes without notice. Options are machine parts that can only be ordered while buying the machine.

C.2 Control: Accessories



Customized software



UTS/UDL

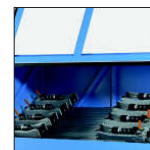


ULS



Barcode scanner

Options



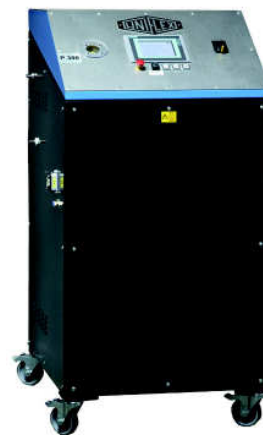
- 409.1 Deventilation of residual pressure
- 409.2 Manual door closing for tight circuit
- 409.3 Low pressure 50-1000 bar



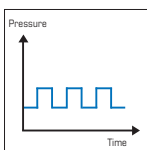
P 350

Technical data	P 350
Test pressure	150 - 1000 bar
Control	Control C.2
Drive	Diaphragm pump + Intensifier
Flow rate (effectively)	12.5 L/min
Reservoir capacity	P 350 Container: 1040 L P 350_Chamber-3600: 330 L
Chamber dimensions	P 350 Container: External: 2100 x 2170 x 2650 mm Internal: 1950 x 1950 x 2200 mm P 350_Chamber-3600: External: 4100 x 950 x 1325 mm Internal: 3600 x 795 x 370 mm
Aggregate dimensions	850 x 1390 x 810 mm
Colour	RAL 5012 blue / RAL 7021 grey / RAL 9002 grey-white
Weight of chamber	P 350 Container: 650 kg P 350_Chamber-3600: 390 kg
Weight of power unit	210 kg
Noise level	75 dBA
Test medium	Water-oil emulsion
Accessories	
Pressure and return filter	✓
Air preparation unit	✓
Quick connector adapter set	✓
Options	
Second chambers are possible	✓

Standard
Quick connector set
Automatic pressure control
Pressure filter 5 µm
Suction filter 100 µm
Anticorrosion additive EM 10 L
Fluid flow inspection glass
Integrated tank



P 350 Aggregate



Dynamic test.