



Due to their compact, all-round accessible construction, high level of user friendliness, and long service life, the HM 450, HM 480 and HM 495 set the standard for quality and cost effectiveness. The crimpers' particularly large opening stroke and the use of long master dies allow you to crimp all types of fittings and up to 12" industrial hoses.



HM 480

Engineered solutions using quality components

- Compact machine for ergonomic work
- HiLo cylinder - Maximum efficiency causing less heat
- Noiseless high-quality pump
- Long master dies to crimp all types of workpieces
- Full length of fittings crimped in one stroke increases product quality and production efficiency

Fixed 6- o'clock die

- Workpiece does not move, making it easier to position laterally
- Increases productivity, driving up profitability
- Reduces risk for injuries

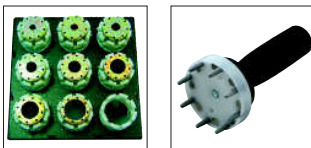
Slide bearing technology

- No greasing improves cleanliness of machine and prolongs its lifetime
- Maximum productivity with very low maintenance costs
- Flaking cannot stick in grease, no risk of prematurely damaging the crimping head
- End product can be used in sanitary applications without cleaning
- 20% more capability for crimping stronger or more difficult couplings versus our competition's equivalent crimpers
- Consistently accurate crimp result

CE compliant

We reserve the right to make technical changes without notice. Options are machine parts that can only be ordered while buying the machine.

Package



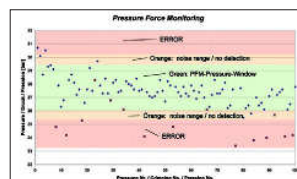
QDS 239 B

QDC 239.5

- Package = Machine
 + PB Ø 17,20,24,28,32,40,44,50,57,71
 + 237.239.2L2 + 245.237L
 + QDC 239.5 + QDS 239 B
 + Control C.2

Pressure Force Monitoring

PFM – Standard on all machines with C.2 Control



Quality-enhancing option for series production. With PFM, the upper and lower pressure limits can be set by adjusting the tolerance values obtained from test pressing.

Pressures outside these limits are output as errors. It is possible to let the machine switch off at a fixed upper or lower limit, thereby obtaining a higher process safety.

This way you can display and record combinations of incorrect hose and fittings, skipped work stage, such as skiving of the hose or a poorly positioned hose-fitting connection. Achieve integrated quality control without any additional effort.

Accessories



PTS



Oil Cooler
OC HM xxx



HM 450

HM 480 | HM 495

Additional Information



Due to the long master dies, you can crimp virtually all types of fittings.



The machines are very compact and narrow for a better work environment.

Technical data	HM 450	HM 480	HM 495
Crimp force (kN / Ton)	4000/400	4500/450	6000/600
No grease: 20% less friction	✓	✓	✓
Control	Control C.2 + Touch	Control C.2 + Touch	Control C.2 + Touch
SAE R 15 / 4SH* 1 piece fitting	3"	3"	3"
SAE R 15 / 4SH* 2 piece fitting	3"	3"	3"
Industrial	6" (12")**	8" (12")**	8" (12")**
Elbows	3"	3"	3"
Max. Crimp range	310 mm	310 mm	310 mm
Opening	+ 130	+ 150	+ 150
Opening without dies	360 mm	380 mm	380 mm
Master dies length (mm)	150 mm	150 mm	150 mm
Type of dies	245 / 237L / 239-xx-Ø-yy	245 / 237L / 239-xx-Ø-yy	245 / 237L / 239-xx-Ø-yy
Speed (mm/sec)			
Close	19	18	17
Crimp	1,4	1,3	1
Open	33	20	20
Noise level	62 dBA	62 dBA	62 dBA
Drive	5,5 kW	5,5 kW	5,5 kW
Oil	300 L	300 L	300 L
L x W x H (mm)	730 x 1590 x 1915	730 x 1590 x 2015	730 x 1590 x 2080
Weight	2600 kg	2600 kg	2700 kg
HiDS (High Pressure Pump Dynamic Suction)	✓	✓	✓

* Special dies (reduced opening).
 ** Pipe fittings without flange.

Type of dies	
	239-xx-Ø-yy
Ø mm	-mm-
6,8	50
9	50
10	50
12	65
14	65
16	65
17	65
19	65
20	65
22	65
24	65
26	65
28	80
30	80
31	80
32	80
36	80
38	80
39	80
40	80
44	80
47	100
50	100
54	100
57	100
62	100

Type of dies	
	237 L / 245
Ø mm	-mm-
54	118
57	118
62	118
67	118
71	118
74	118
78	118
84	118
86	118
90	118
96	118
103	118 / 130
106	126 / 130
111	126 / 130
116	126 / 130
121	126 / 130
126	126 / 130
131	126 / 130
136	130
146	150
156	150
170	150
185	150
200	150
230*	220
265*	220
275*	220
305*	220

Accessories

C.2 Control: Accessories



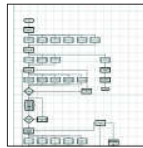
QDS 239 S



QDS 239 C



QDS 239 R



Customized software



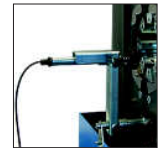
Electronic caliper



Calibration mandrel



Barcode scanner



TA (A)



OCS



LUS / LUF



PS Double foot pedal



UTS/UDL



ULS



807.2